

Social Innovation

Methodologies and Research

Nicolás Monge Iriarte, Riga Technical University

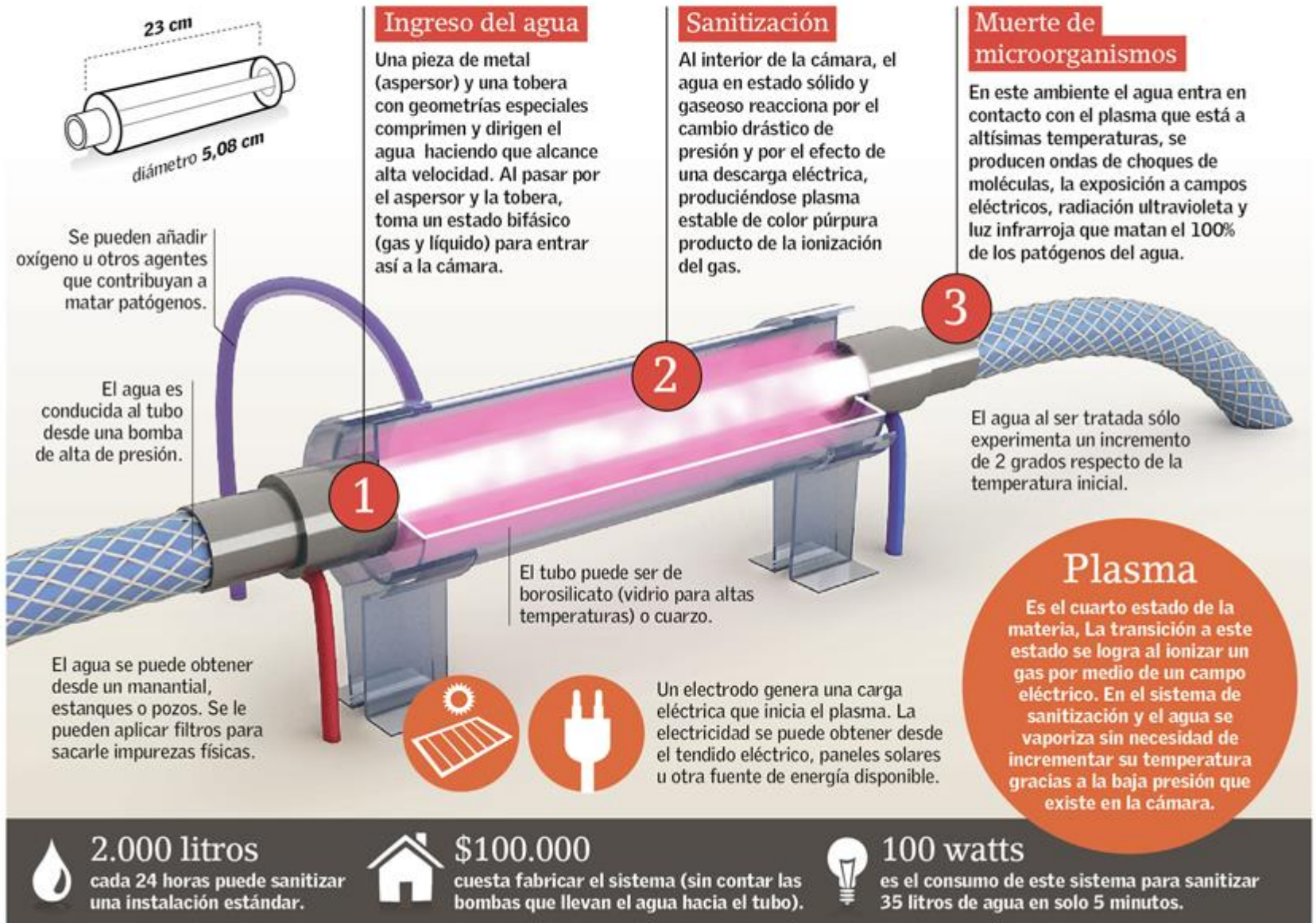
26 of February, 2016

Nicolás Monge Iriarte, the new participant of the project is sharing his experience of developing social innovation in Chile and participation in social innovation research in Dortmund University, Germany



Un tubo que mata los gérmenes del agua

El sistema promete revolucionar la obtención de agua potable en el mundo, sobre todo en áreas azotadas por enfermedades como el cólera. El aparato convierte agua contaminada en un líquido sin presencia de virus, bacterias o microalgas dañinas.



The Chilean Context





Social Innovation in Latin America: The Chilean Case



[http://www.cieplan.org/media/publicaciones/archivos/373/Social Innovation in Latin America The Chilean Case.pdf](http://www.cieplan.org/media/publicaciones/archivos/373/Social%20Innovation%20in%20Latin%20America%20The%20Chilean%20Case.pdf)

SI context in Chile

- It is very positive that more and more people are interested in social innovation and social entrepreneurship
- Unfortunately, SI and SE are in the top down paradigm too
- Social entrepreneurs think co-creation is about to set up a solution and then ask to the community if they like the project
- The focus is technology and business with social impact

SI context in Chile

- So business schools are the most interested in SI and ES
- Most of social entrepreneurs don't know how to work with the community
- Poor communities are waiting for solution from the government, NGOs, companies, etc
- Their participation is very low
- Governmental programmes and institutions lack a clear concept of social innovation

We need to co-create a social innovation paradigm but this is a long term process because it involves a change of culture

What about research in
Social Innovation?

There is a lack of research, impact studies and literature in Chile and Latin America

de la INNOV
a la POLÍT
Historias de éxito en

Nohra Rey de Marulanda



Domanski, Monge, Quitiaquez y Rocha (eds.) Innovación Social en Latinoamérica

Innovación Social en Latinoamérica



Dmitri Domanski, Nicolás Monge, Germán Quitiaquez y Daniel Rocha (eds.)



Fundación para La
Innovación Social



technische universität
dortmund



Sozialforschungsstelle
Zentrale Wissenschaftliche Einrichtung



UNIMINUTO
Corporación Universitaria Minuto de Dios
Educación de calidad al alcance de todos



Gobernación de
CUNDINAMARCA



OMIN

na
s



Research is the key to Foster social
innovation



Fundación para la
Innovación Social

¿Who are we?

LaFIS wants to promote the development of social innovation.

We understand the concept as a process where one or more communities affected by social problems (and different stakeholders), lead the creation of more effective and efficient solutions than others developed in the past. Also, the solutions have to be sustainable, inclusive, scalable and replicable.

.



Bottom App.org

MAPPING

En tiempo real



¿Qué esperas para ser parte de Bottom App? cuéntanos que pasa en tu barrio y trabajemos juntos para un mejor entorno.

Ingresar con Facebook


TODAS ● ● ●

Todas 652


ORDENAR POR SELECCIONAR ▲

- Children project**
0 Publicado hace 7 horas
We have a great project for children here! Join us!
www.childrenproject.org
- Drugs**
0 Publicado hace 8 horas
Drugs problems here
- Park**
0 Publicado hace 8 horas
We are improving the park
- ZSI**
3 Publicado hace un mes
Here is the ZSI
- Park**
0 Publicado hace un mes
We are improving the park
- Traffic problem**
0 Publicado hace un mes

0 **Park**
votos Publicado por Nicolás hace 8 horas



We are improving the park



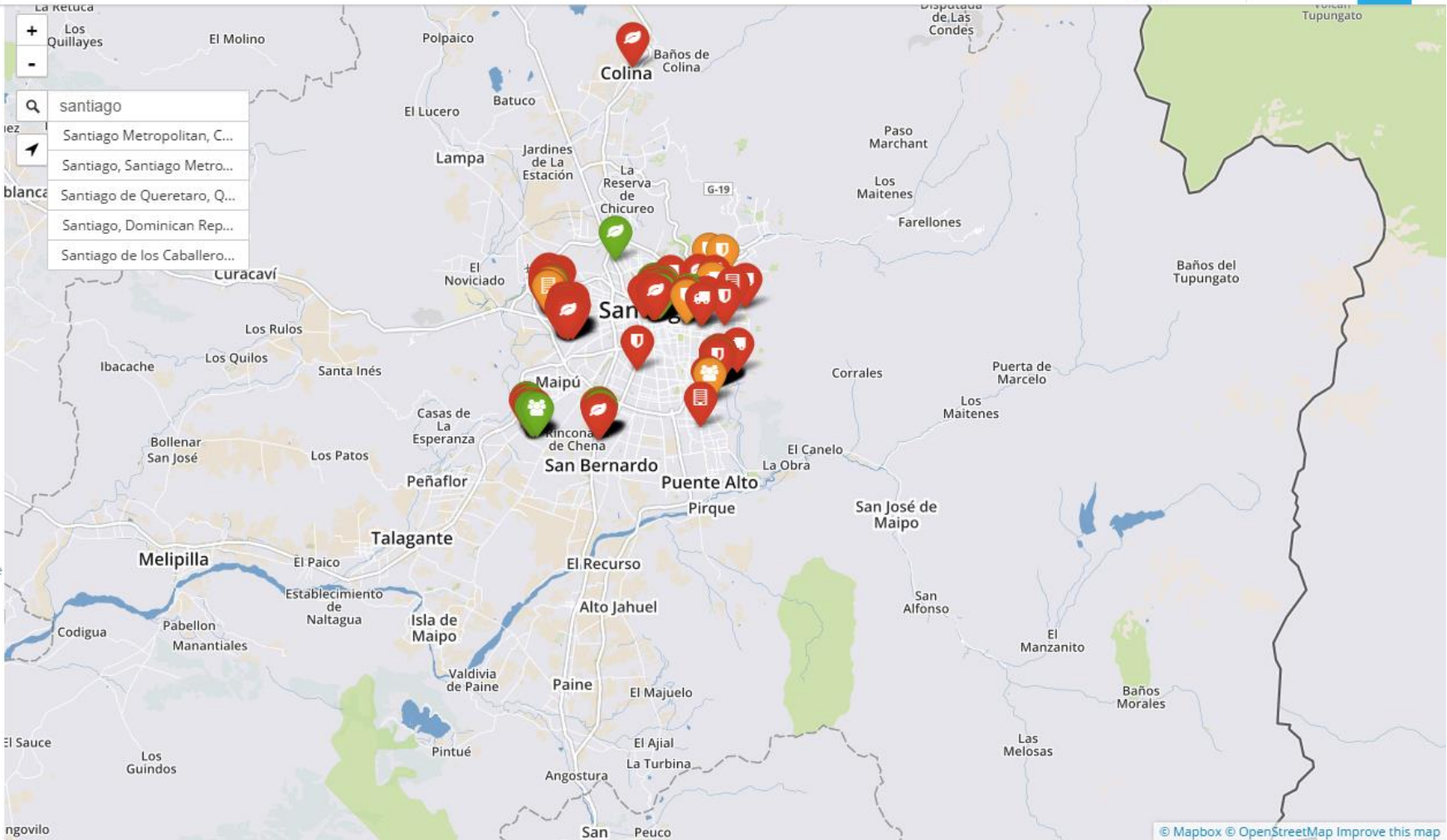
Map interface showing a park area with a location pin.

Map controls: +, -, 🔍, 📍

Location pin details:
Park
0 Publicado hace 8 horas
We are improving the park

Mapbox © OpenStreetMap Improve this map

- Todas 647
- Obras Públicas 91
- Medio Ambiente 130
- Seguridad 156
- Desarrollo Comunitario 142
- Tránsito Y Transporte 68



Our model

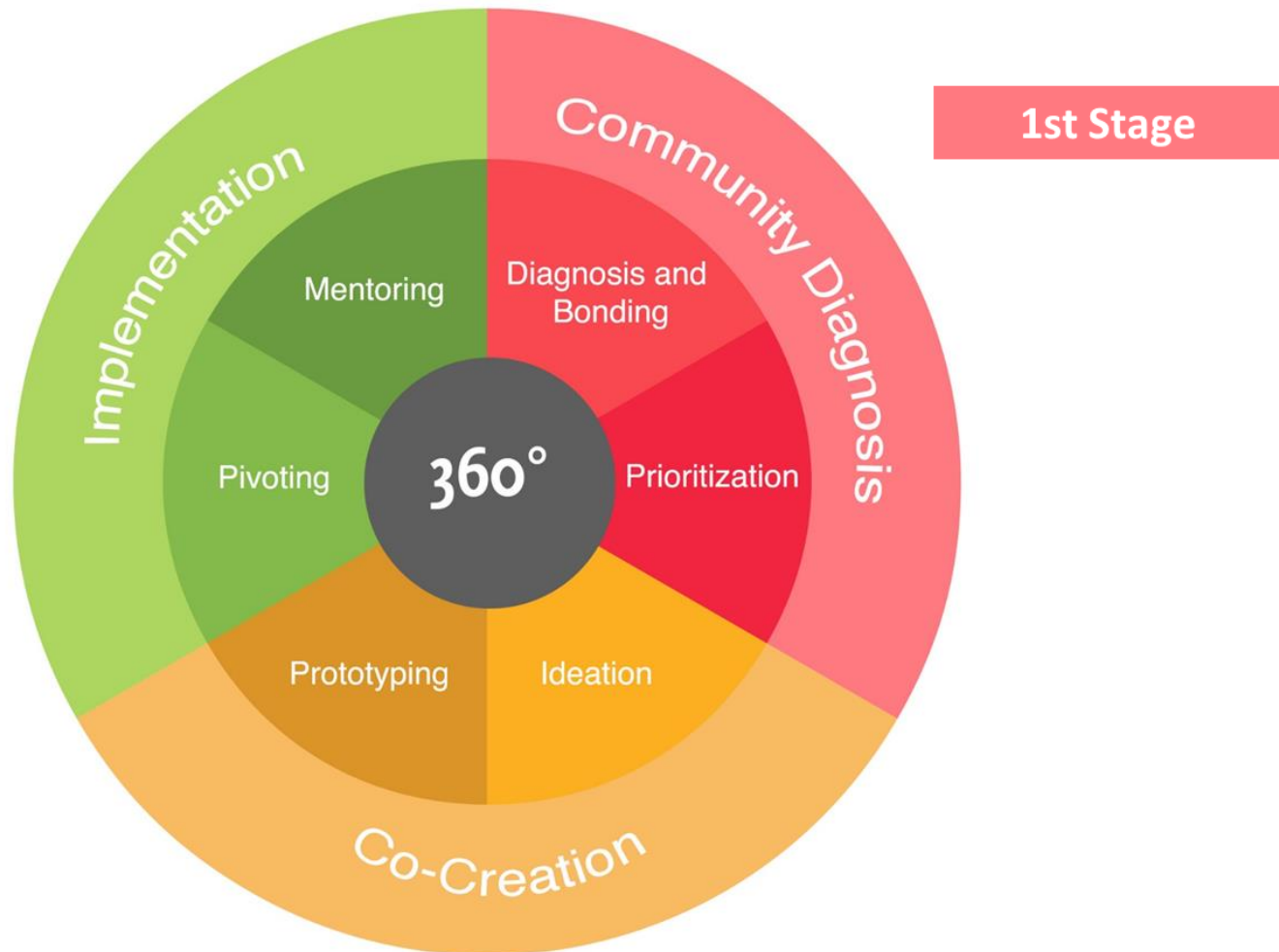


1st Stage

3rd Stage

2nd Stage

First Stage: Community Diagnosis







Bottom App.org

- Todas 647
- Obras Públicas 91
- Medio Ambiente 130
- Seguridad 156
- Desarrollo Comunitario 142
- Tránsito Y Transporte 68



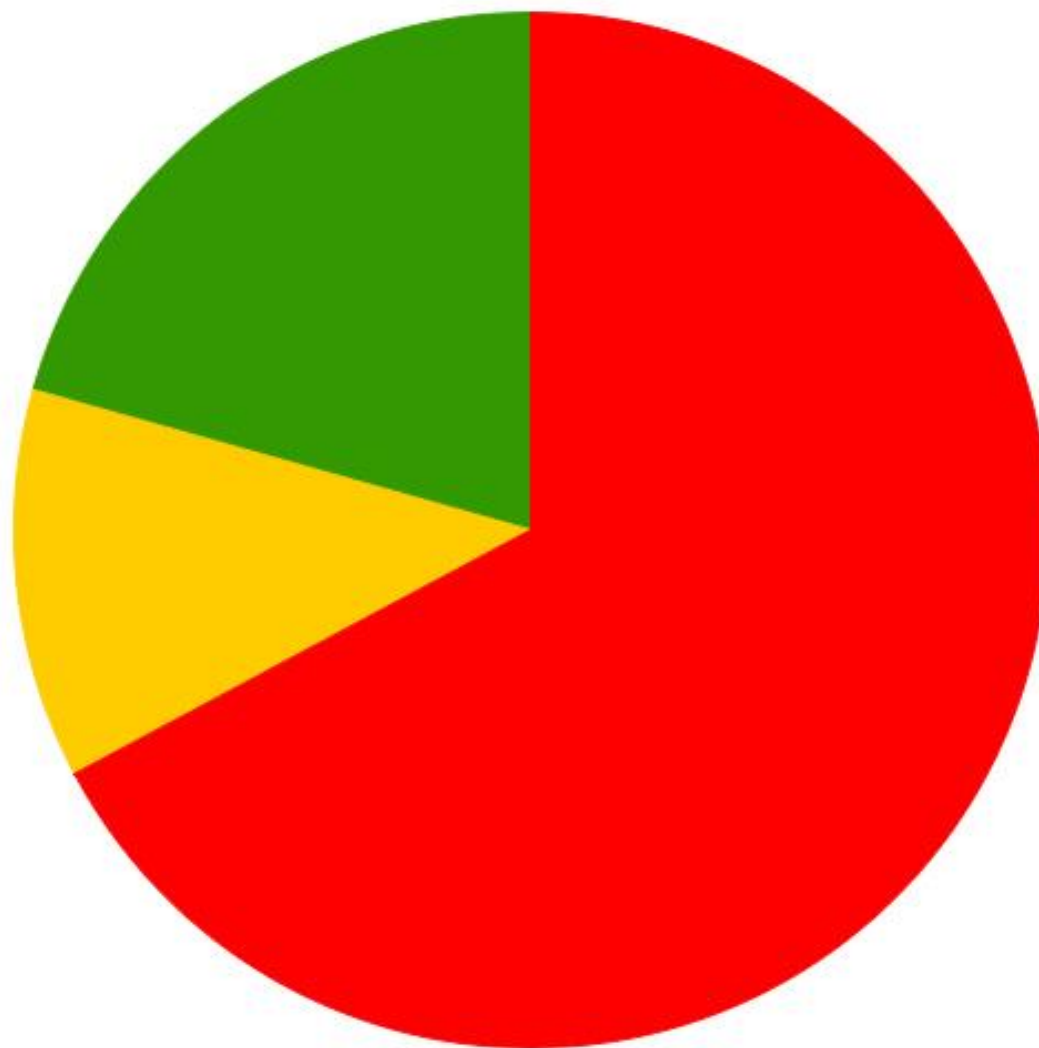


EFFECTOS

PROBLEMA

CAUSAS

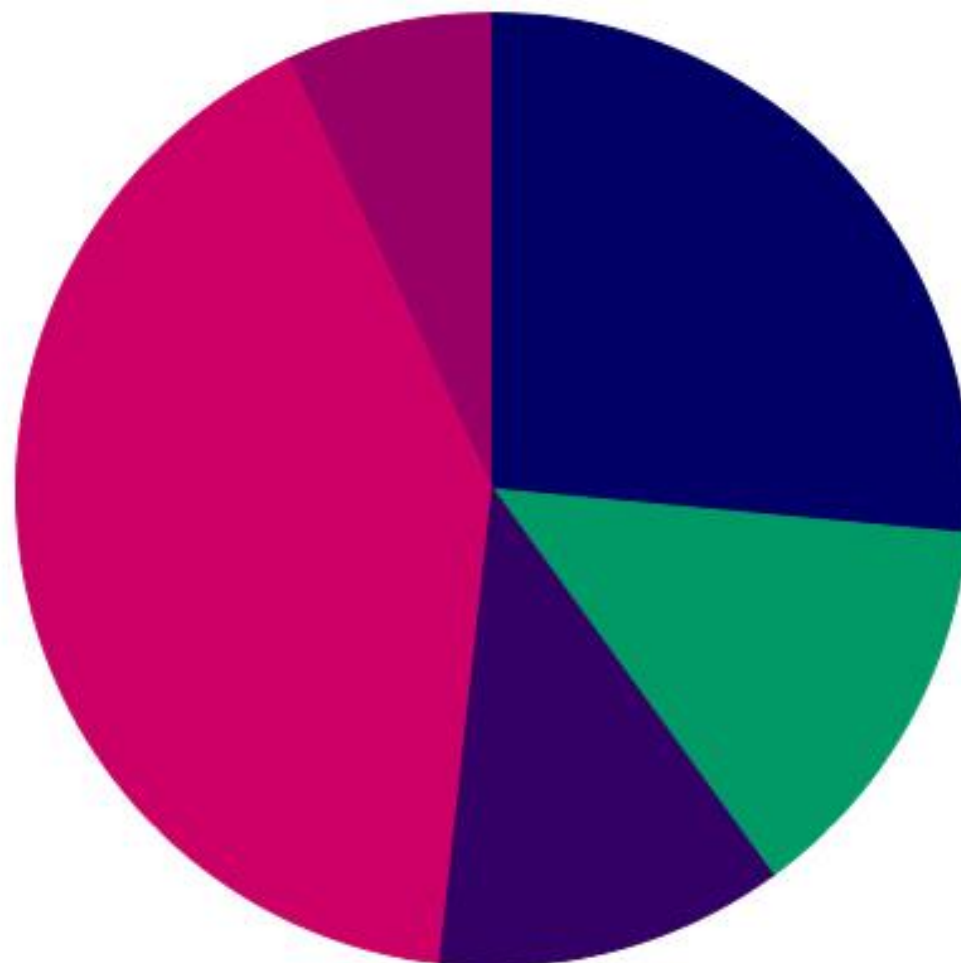




■ Problemáticas
(67.2%)

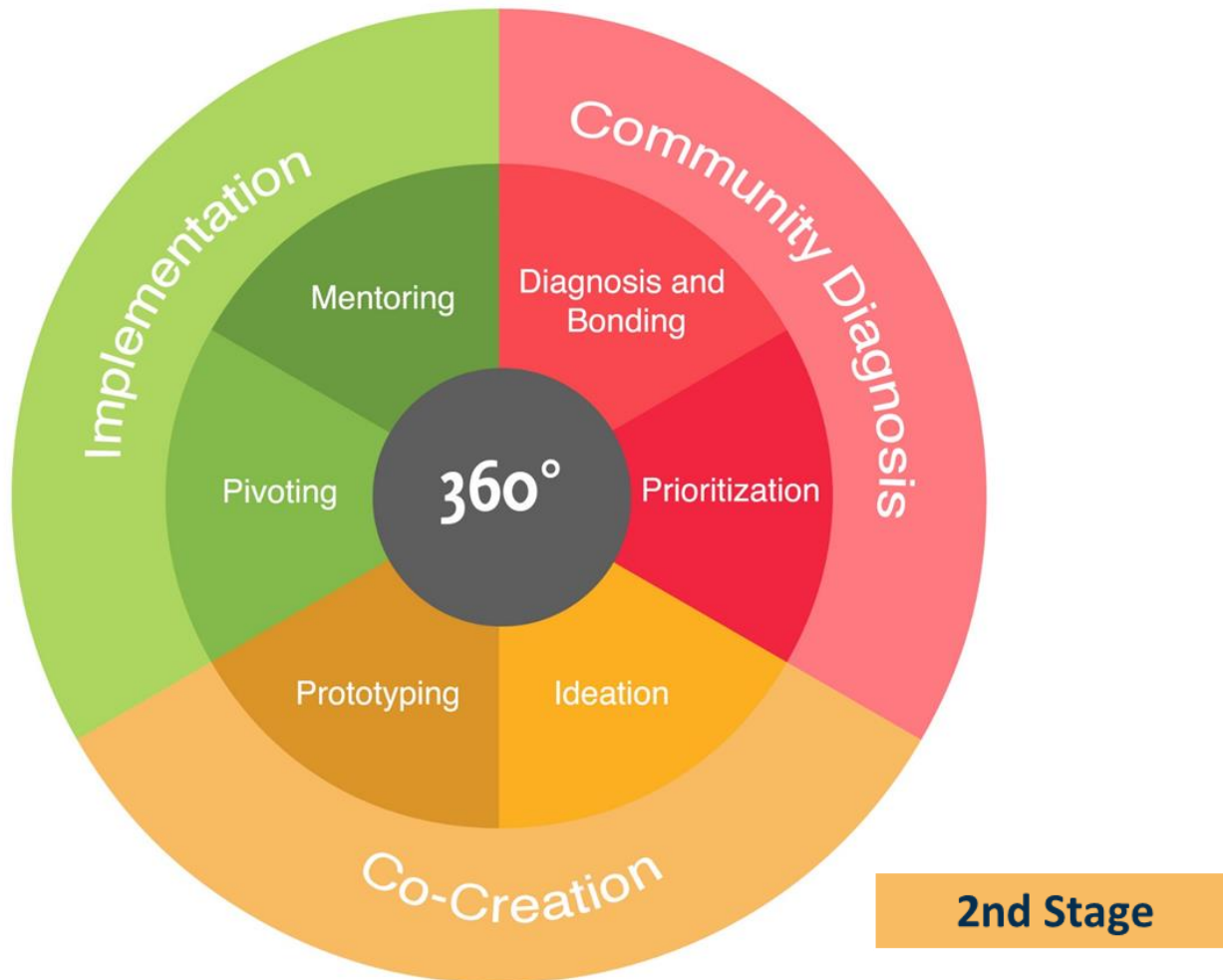
■ Puntos en desarrollo
(12.2%)

■ Soluciones
(20.6%)



■ Obras públicas 26.5% ■ Medio ambiente 13.5% ■ Seguridad 11.7% ■ Desarrollo comunitario 41.2% ■ Tránsito y transporte 7.1%

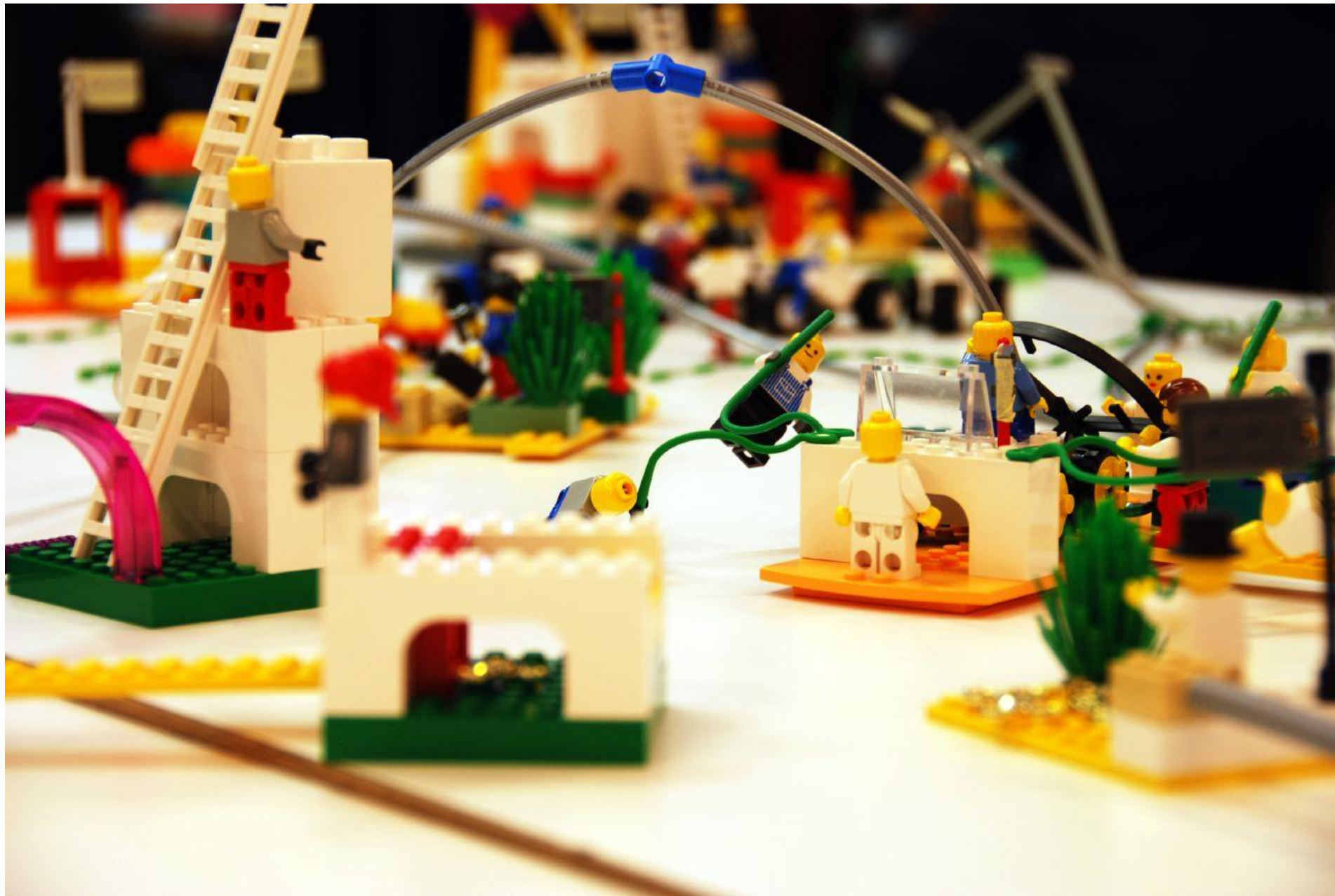
Second Stage: Co-Creation



Some Methodologies

- Design thinking
- Storytelling
- Lego® serious play®
- Business model canvas
- Prototyping









Whiteboard with orange sticky notes and handwritten text.

Whiteboard with the text "Participo en la comunidad" and "CONTRIBUCION" and yellow sticky notes.

Table with papers and a woman sitting at it.





Third Stage: Implementation

3rd Stage





Benefits

- **Fast and visual diagnosis in a specific area**
- **Participants learn several tools to implement their projects**
- **Participants have more confidence in their skills to overcome social problems**

- **Social projects leaded by the community**
- **Co-creation process**
- **Better relationship between stakeholders**
- **Solutions in a short period of time**



Social Innovation and new pathways to social change- first insights from the global mapping



Social Innovation 2015: Pathways to Social Change
Research, policies and practices in European and global perspectives

Vienna, November 18-19, 2015

Under the Auspices of the Mayor and Governor of Vienna, Dr. Michael Häupl





“The tracks of international research on innovation demonstrate that the technology-oriented paradigm – shaped by the industrial society – does not cover the broad range of innovations indispensable in the transition from an industrial to a knowledge and services-based society: Such fundamental societal changes require the inclusion of social innovations in a paradigm shift of the innovation system.”

Vienna Declaration: The most relevant topics in social innovation research

Mission: Extending knowledge about Social Innovation as a driver of social change

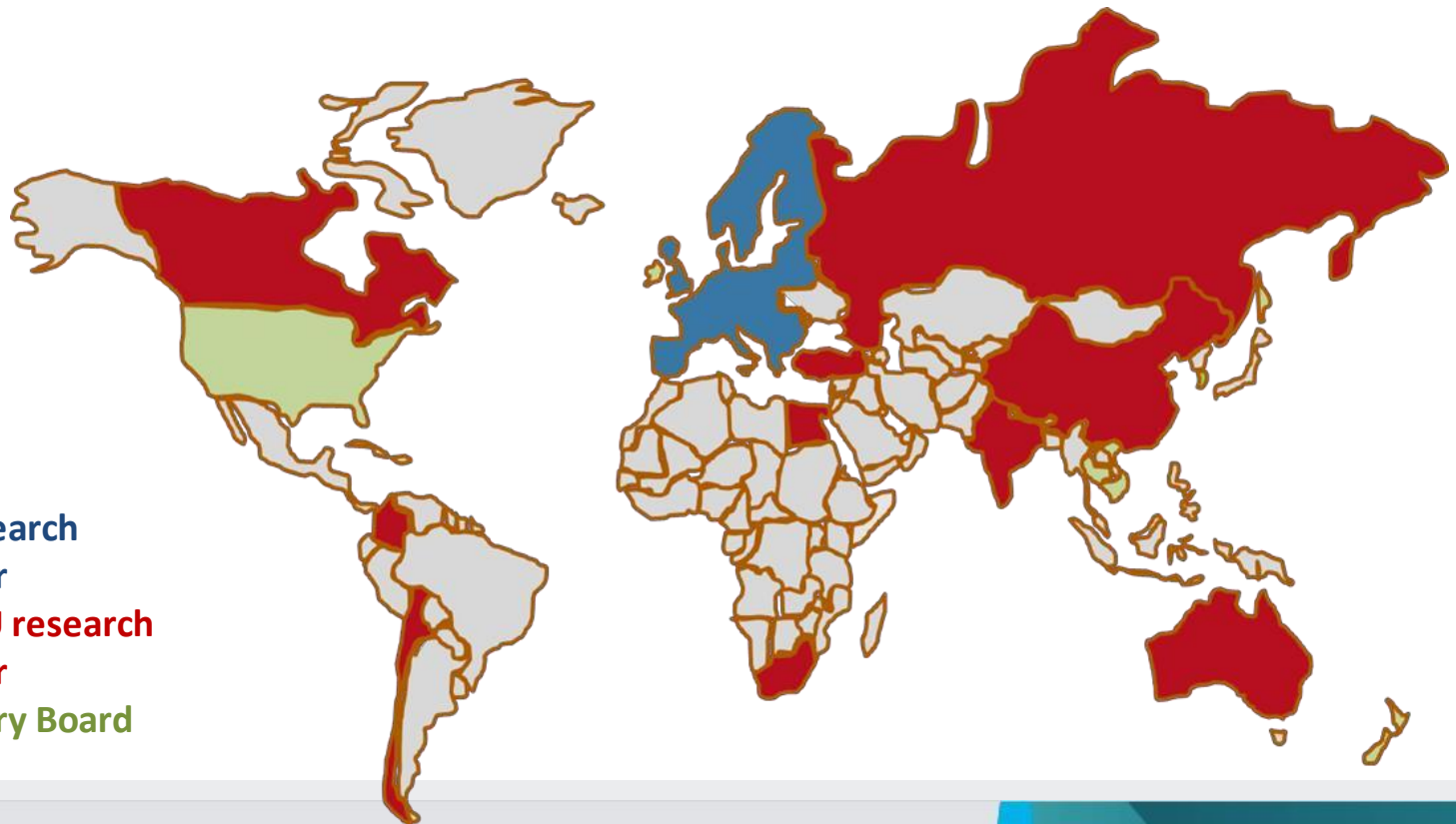
- Integrating theories and research methodologies **to advance understanding of SI** leading to a comprehensive new paradigm of innovation.
- Undertaking **European and global mapping** of SI, thereby addressing different social, economic, cultural, historical and religious contexts in eight major world regions.
- Ensuring relevance for policy makers and practitioners through in-depth analyses and case studies in seven **policy fields**, with cross European and world region comparisons, foresight and policy round tables.



This project has received funding from the European Union's Seventh Framework Programme for research, technological development and demonstration under grant agreement no 612870.

International SI-DRIVE Consortium Members

- SI-DRIVE involves 14 partners from 12 EU Member States, 11 partners from other parts of the world, and 13 high level advisory board members: all in all 30 countries.

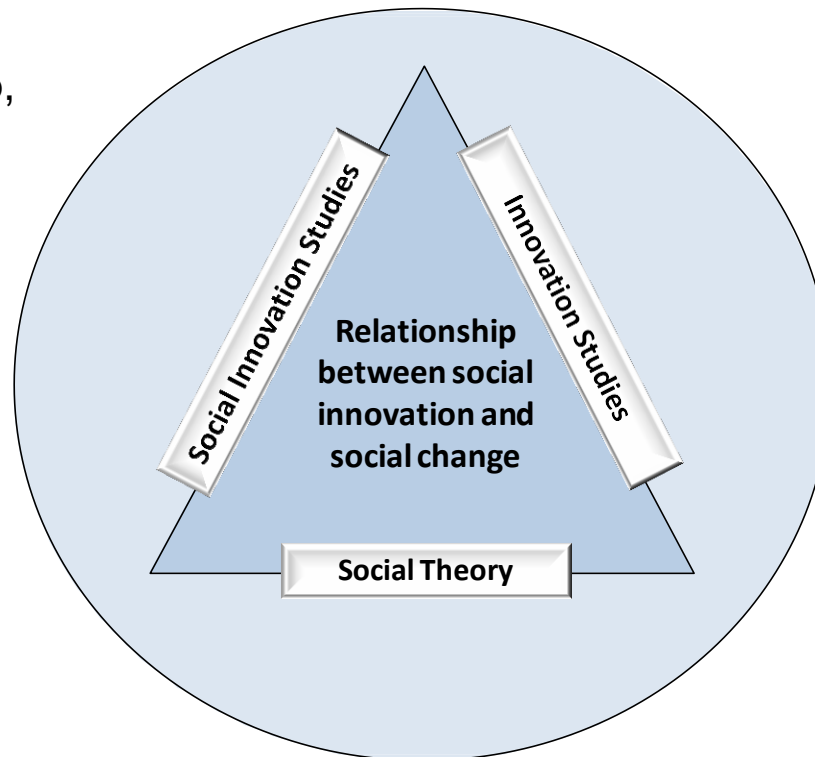


SI-DRIVE Approach builds on:

- a) comprehensive *working definition* of social innovation;
- b) clearer insight into the need for a *theory of social innovation*;
- c) better appreciation of the relationship between *social change, social innovation and political intervention*;
- d) clarification of how social innovation progresses including the *lifecycle from idea to impact*;
- e) *cross-sector cooperation*;
- f) identification of *key dimensions of SI*; and
- g) elaborating a process of *cyclic improvement of theory and methodology*.

Building blocks towards a Theory of Social Innovation

Social Entrepreneurship,
 Social Economy,
 Local and Regional
 Development,
 Design Thinking,
 (History of Social
 Innovation)



Innovation Systems,
 Transition research,
 STS, Business
 Innovation

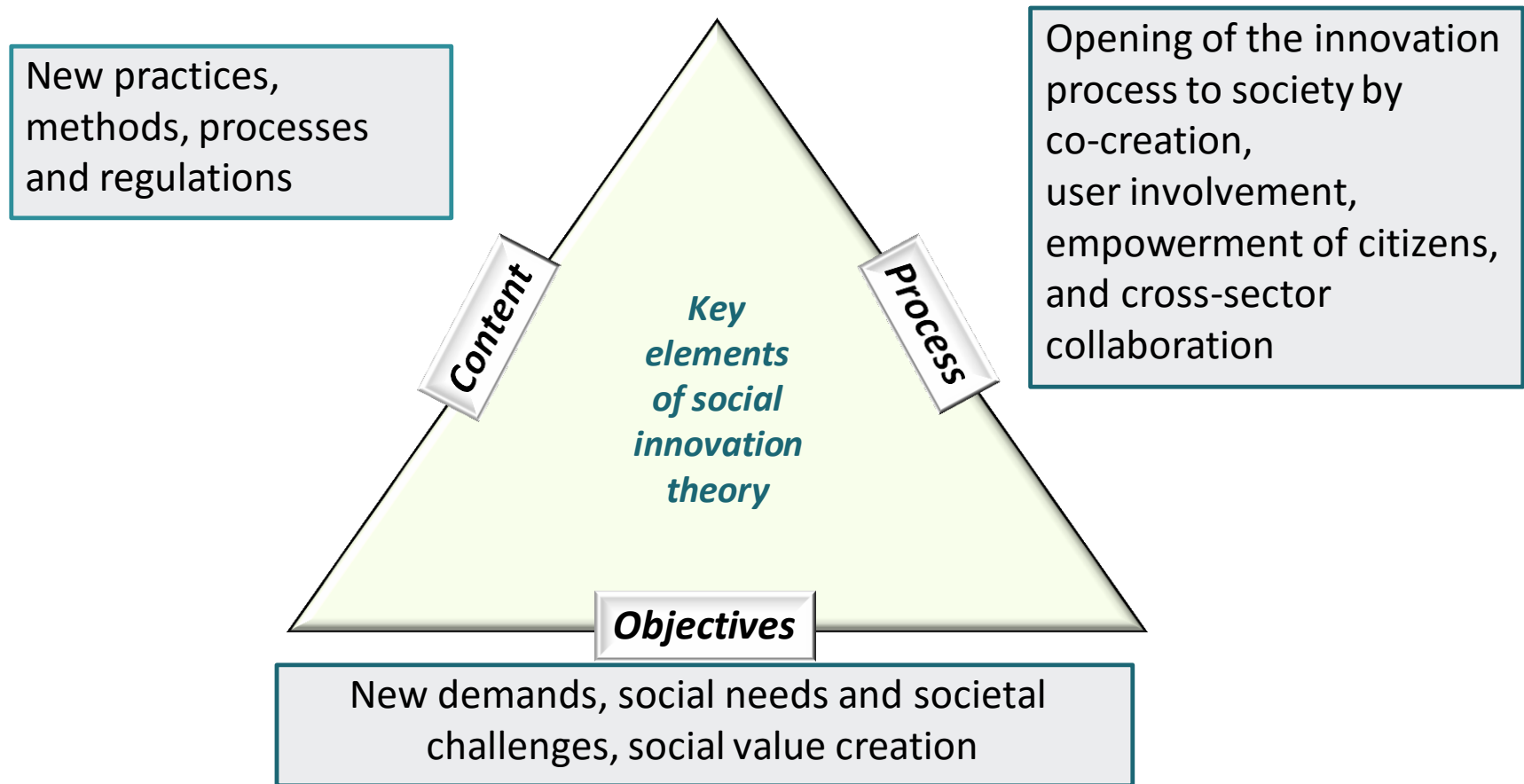
Theories of Social Change, Practice
 Theory, Development Theories

Variety of approaches and conceptions

At the same time we find a lot of **conceptual differences in the theoretical fields**, not only with regard to the concept and understanding of (social) innovation but also regarding:

- the role of technologies,
- the main actors and drivers,
- the relationship to social change,
- the governance and framework conditions, and
- the significance of power and conflict.

New Innovation Paradigm

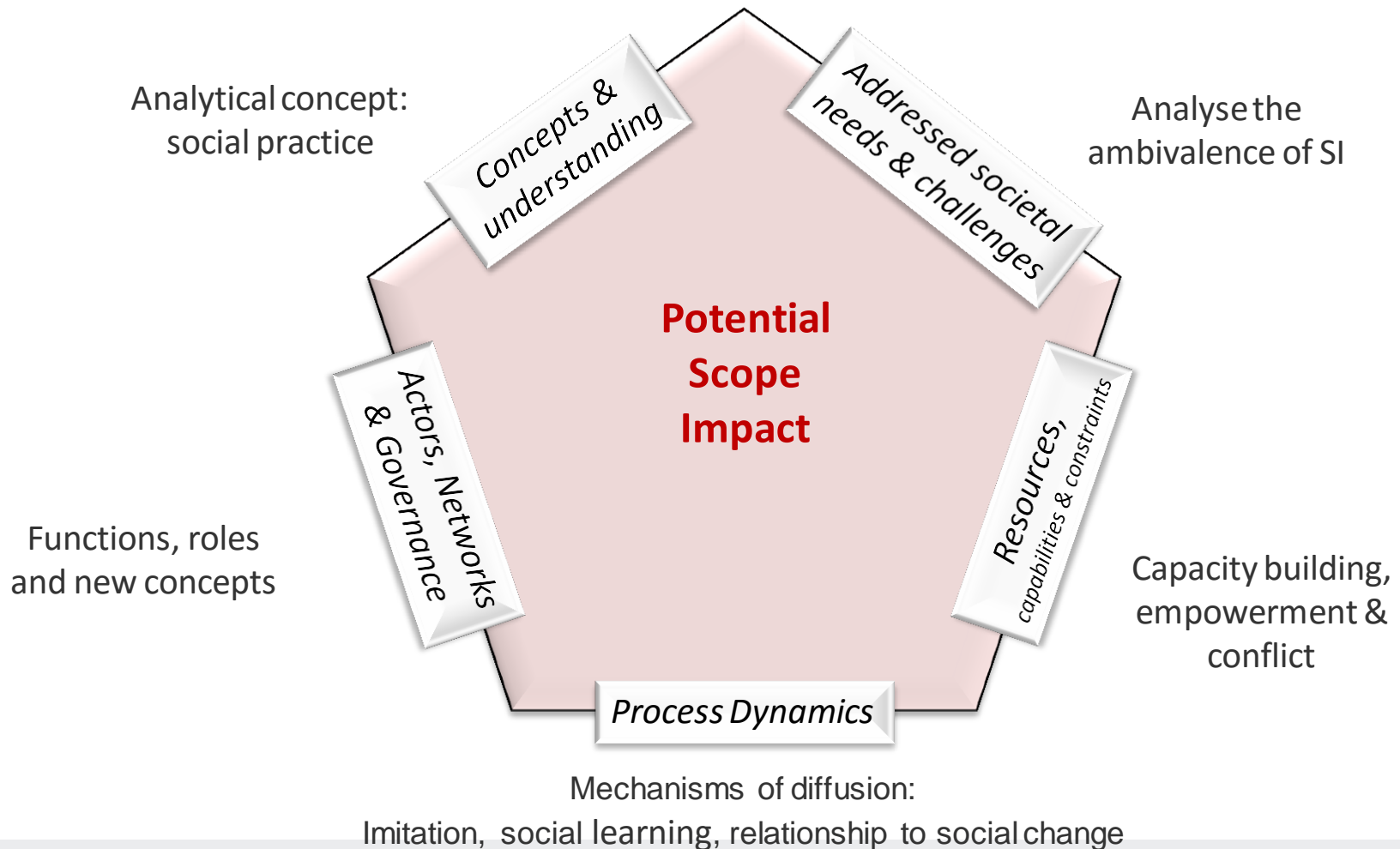


Social Innovation – Working Definition

Social innovation is seen as

- *a new combination or figuration of practices* in areas of social action,
- prompted by certain actors or constellations of actors
- with the goal of better coping with needs and problems than is possible by use of existing practices.
- An innovation is therefore social to the extent that it varies social action, and is **socially accepted and diffused in society**.
- Depending on circumstances of social change, interests, policies and power, social ideas as well as successfully implemented SI may be **transformed and ultimately institutionalised as regular social practice or made routine**.

Five Key Dimensions of Social Innovation



Combining Quantitative and Qualitative Research Baseline Mapping Activities

The first empirical phase (baseline mapping; general scan of social innovation practices) is consisting of five elements:

1. Regional reports
2. Policy field reports
3. Global Mapping
(Database of 1.000+ SI cases)
4. Social Innovation Database
Screening
5. Additional: Explorative Policy
and Foresight Workshops



Global Mapping

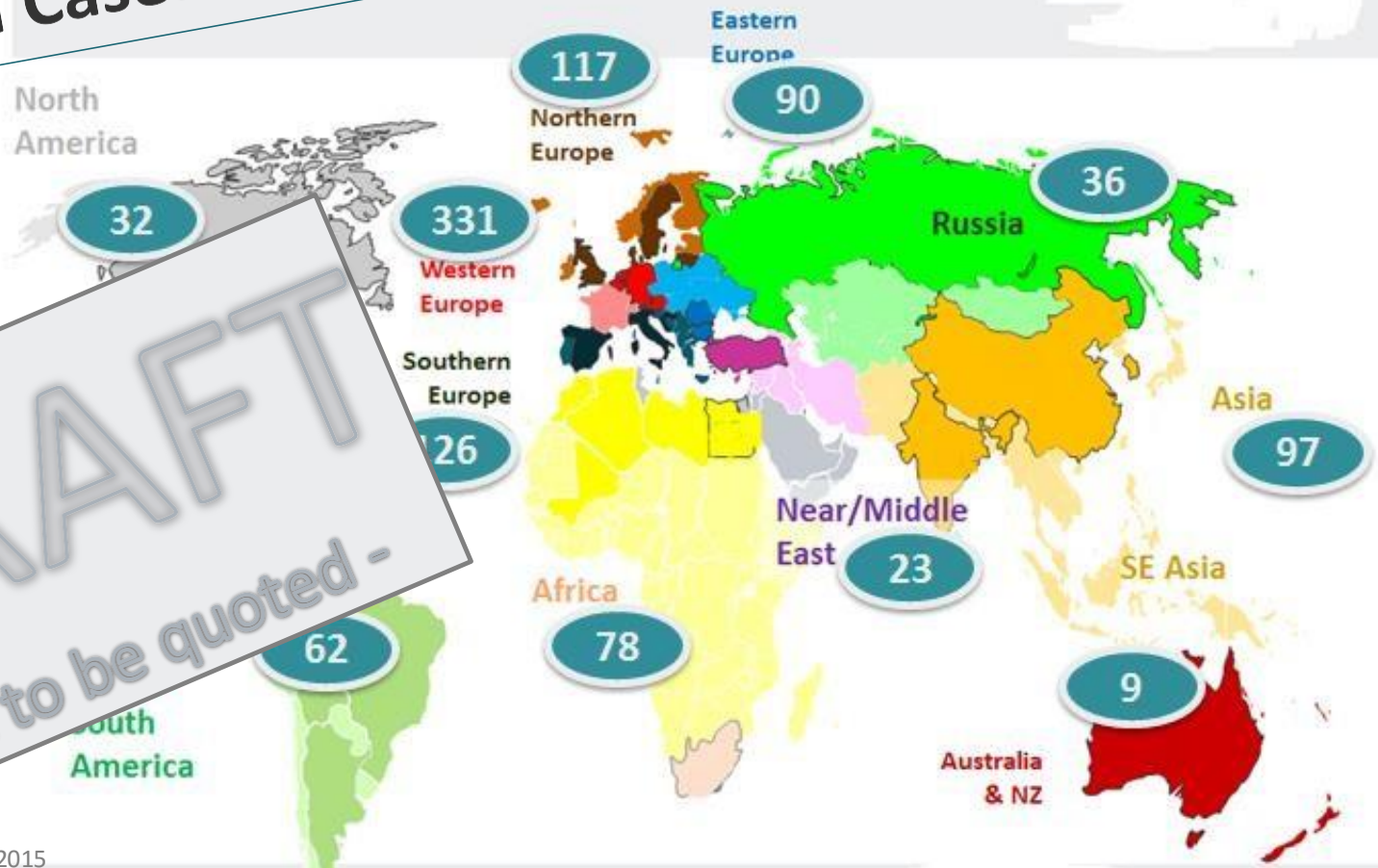
Objectives:

- Launching a global synopsis and landscape of the state of the art of SI with 1.000+ cases from all the world
- Setting up a database for analysis based on the recent theoretical state of the art
- Enabling a first SI typology
- Giving the ground for a selection of 70 cases for in-depth analysis

Field work:

Done by all 25 partners of SI-DRIVE, assisted by the advisory board members, as experts of regional and national SI activities

1.011 SI Cases all over the world



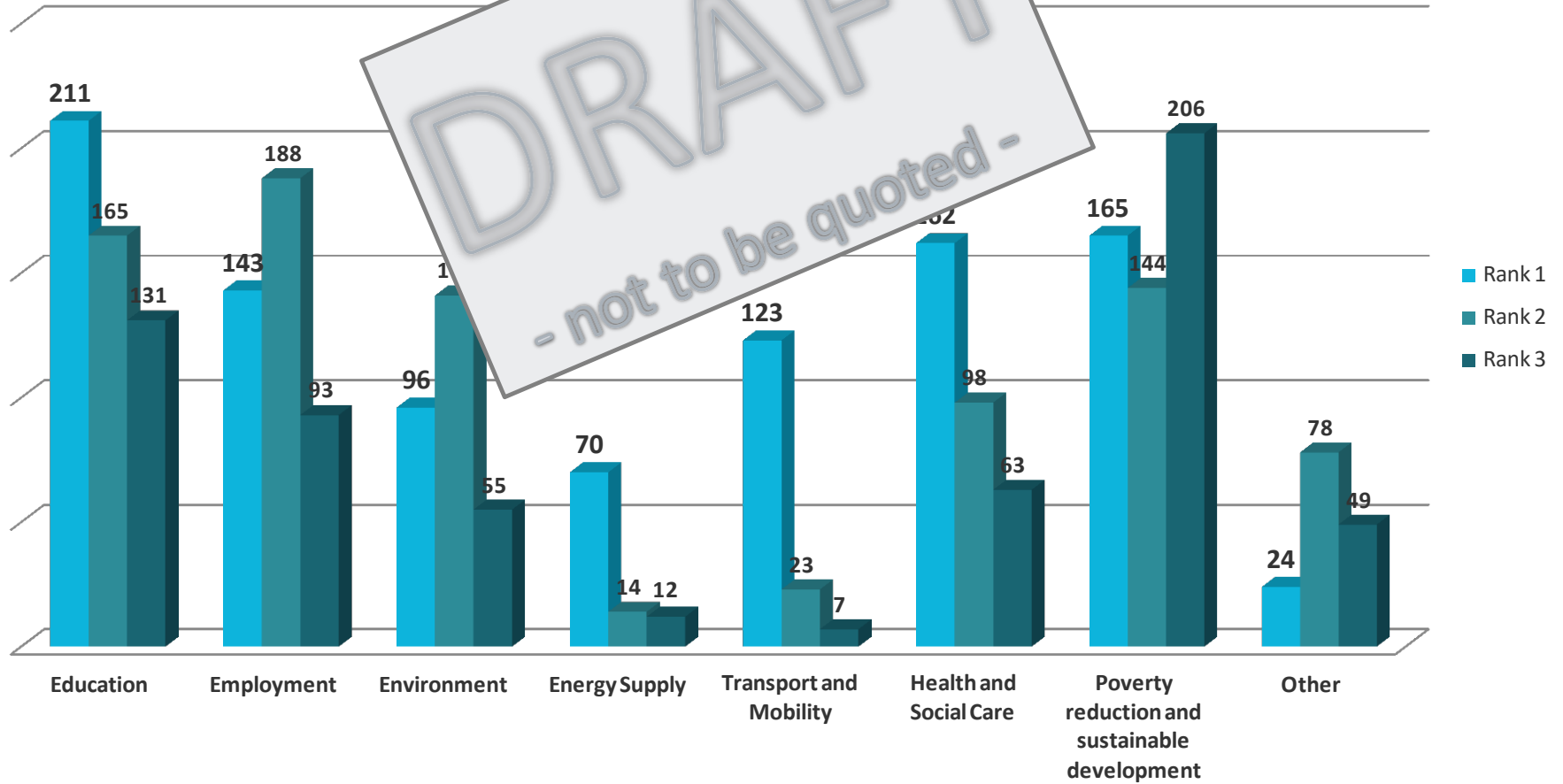
DRAFT
- not to be quoted -

Data status: 04-11-2015
N = 1011
N/A = 10

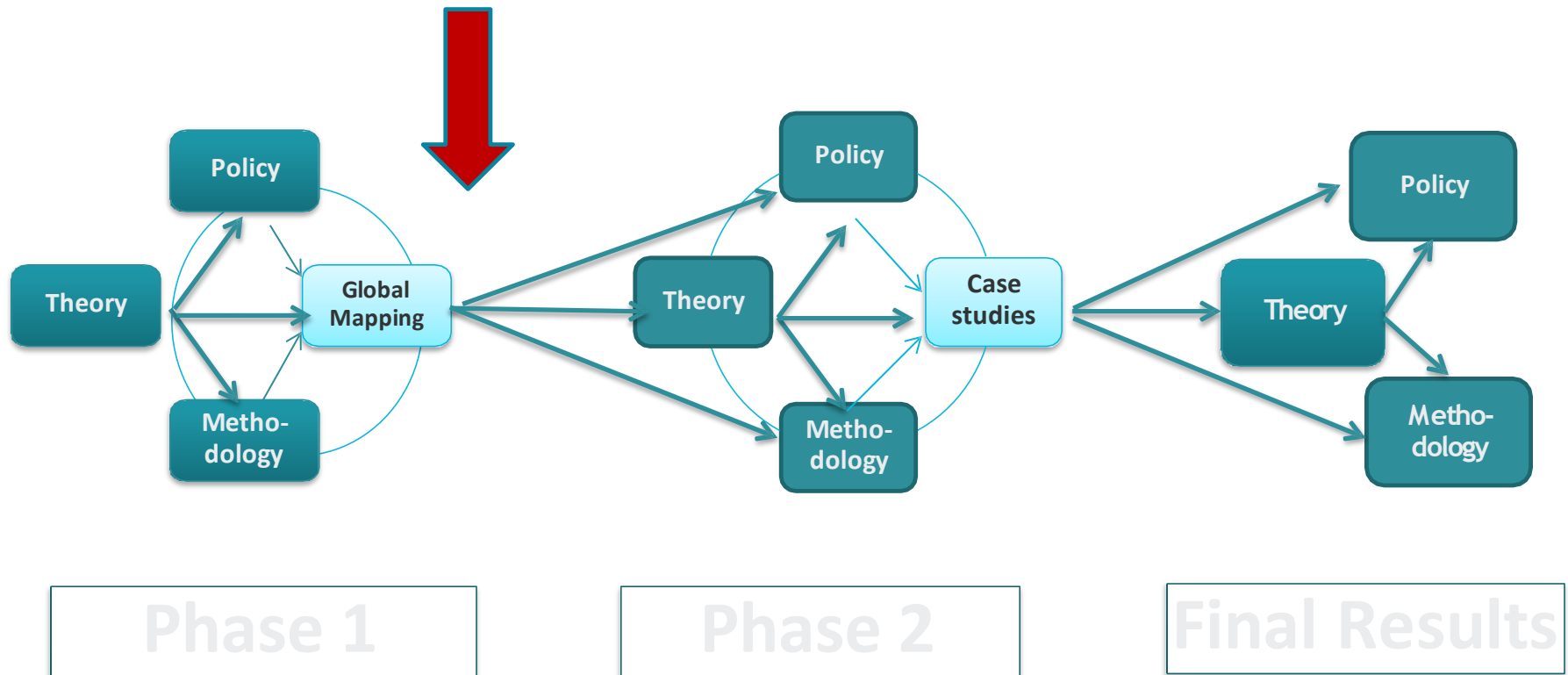
Ranking: Policy Fields we are addressing

DRAFT

- not to be quoted -



Iterative Process: Two Empirical Phases Based on and Feeding Theory – Methodology – Policy Development



Next Steps

Comparative analysis (Mapping 1)

Key dimensions of SI: First comparative across sectors and countries (April 2016)

The purpose of this second stage analysis is:

- to explore key issues that are pertinent to the support/success or detriment/failure of the cases;
- to start exploring possible trends and drivers that will shape the future of social innovation in the respective areas.
- In addition, this cross-cutting thematic analysis will enable the identification of key policy issues of citizen empowerment, access to finance, scaling-up models, skills and training, social entrepreneurship and collective creation and diffusion.

Two main empirical phases

Mapping 1 - baseline mapping of social innovation (state of the art reports, report of regional strategies, selection of 1.000 and more cases for a SI database)

Step in between:

Selection of 300 most important cases based on five key dimensions of SI and associated KPIs as a basis for the selection of the 70 in-depth cases.

Mapping 2 (case studies) - typology of social innovation/ (using mixed method research protocol consisting of detailed interviews, extensive status check, follow up surveys, and Qualitative Comparative Analysis QCA, 70 cases.



Systemic view on Social Innovation

To understand the modes of governance of social innovation, a focus should be on networks and their actor constellations, modes of cooperation and communication channels.

To develop an integrated understanding of the role of various actors in social innovation, a broader concept is needed that appreciates social entrepreneurship but also takes account of other actor types.

To establish a systemic view upon social innovation.

Social Innovation Policies

- **Social innovation requires also appropriate social innovation policies.**
- Many social inventions are hindered by traditional approaches in public policies. If Europe wants to tackle the challenges policy makers need to understand how to involve and make use of the participation of citizens to serve the public good.